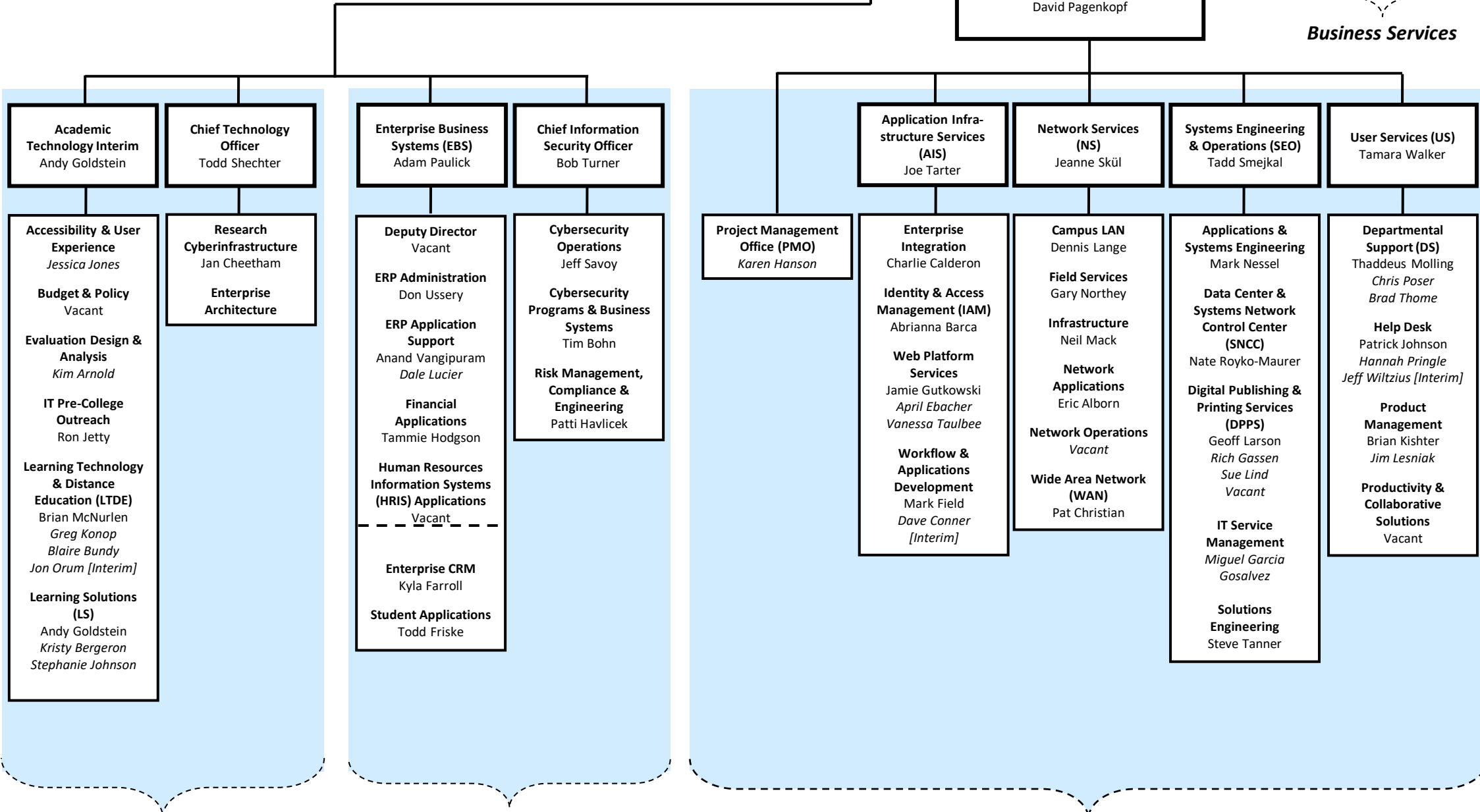
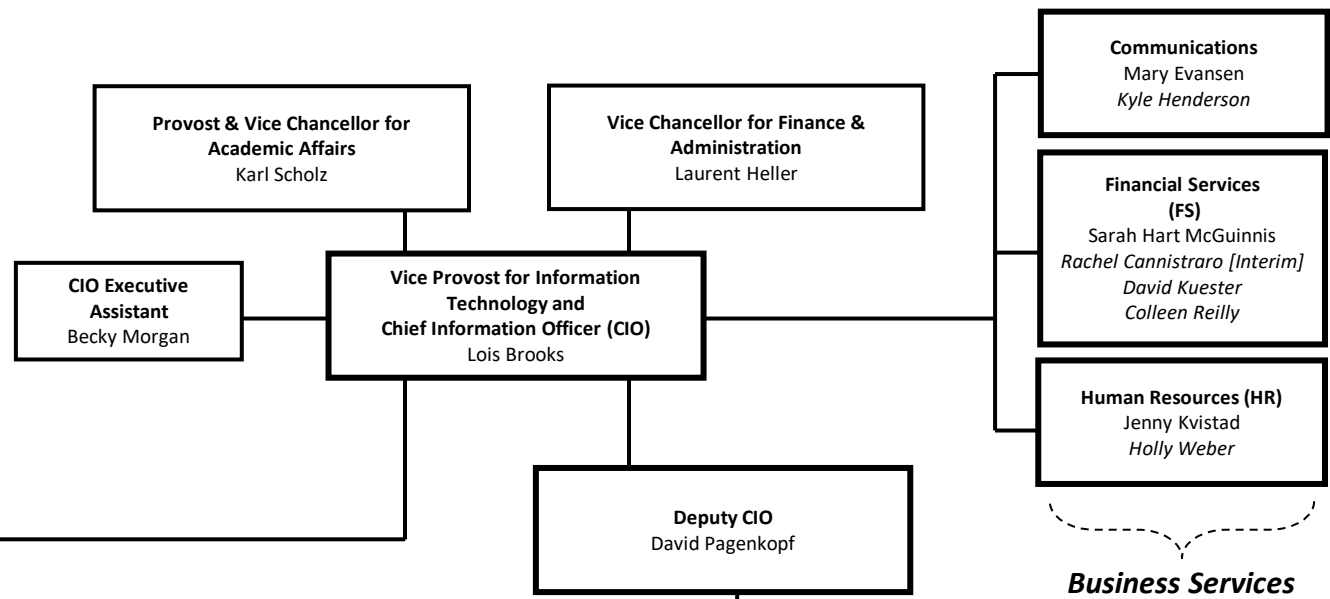


Organizational Overview

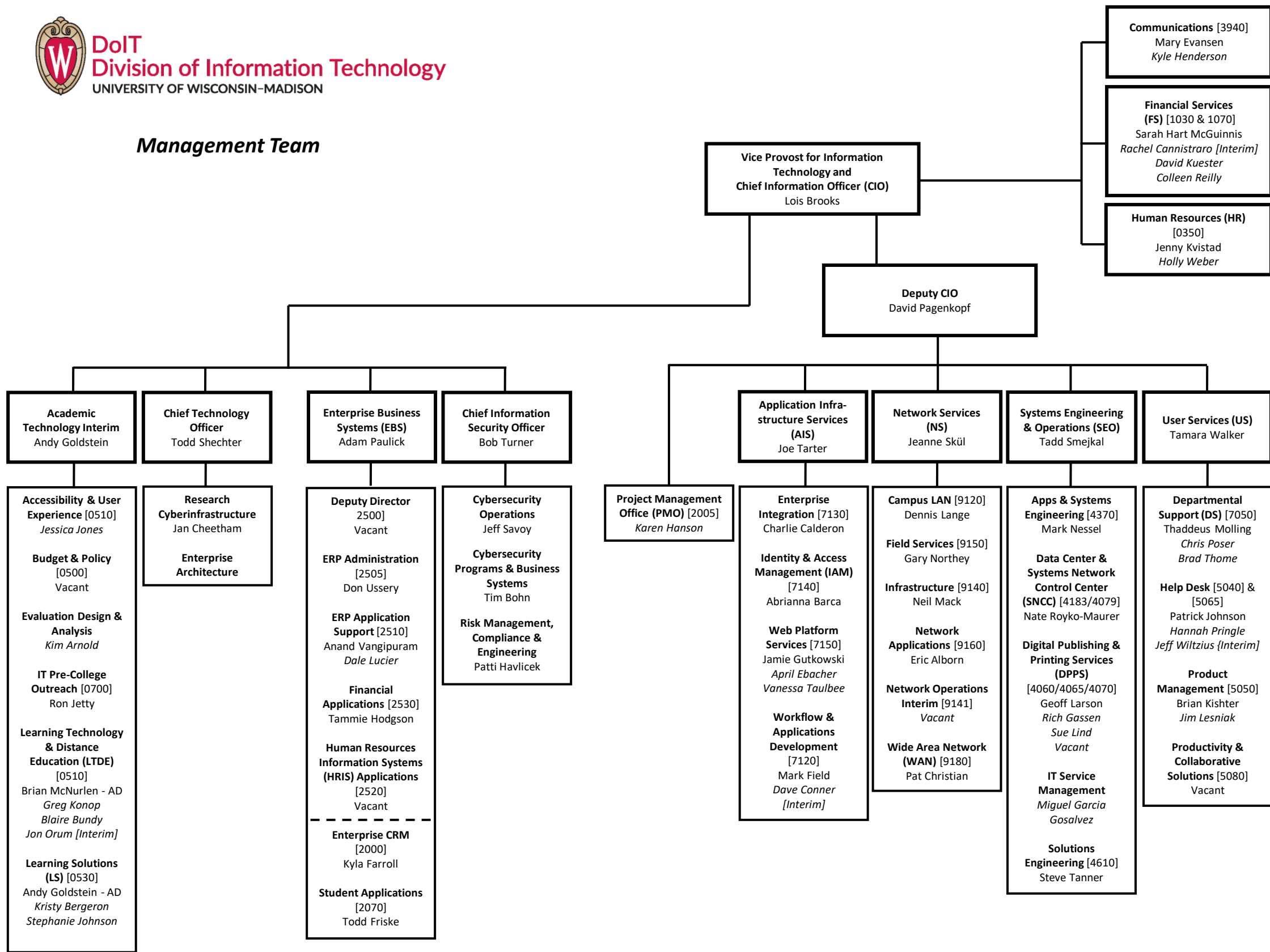


University Mission

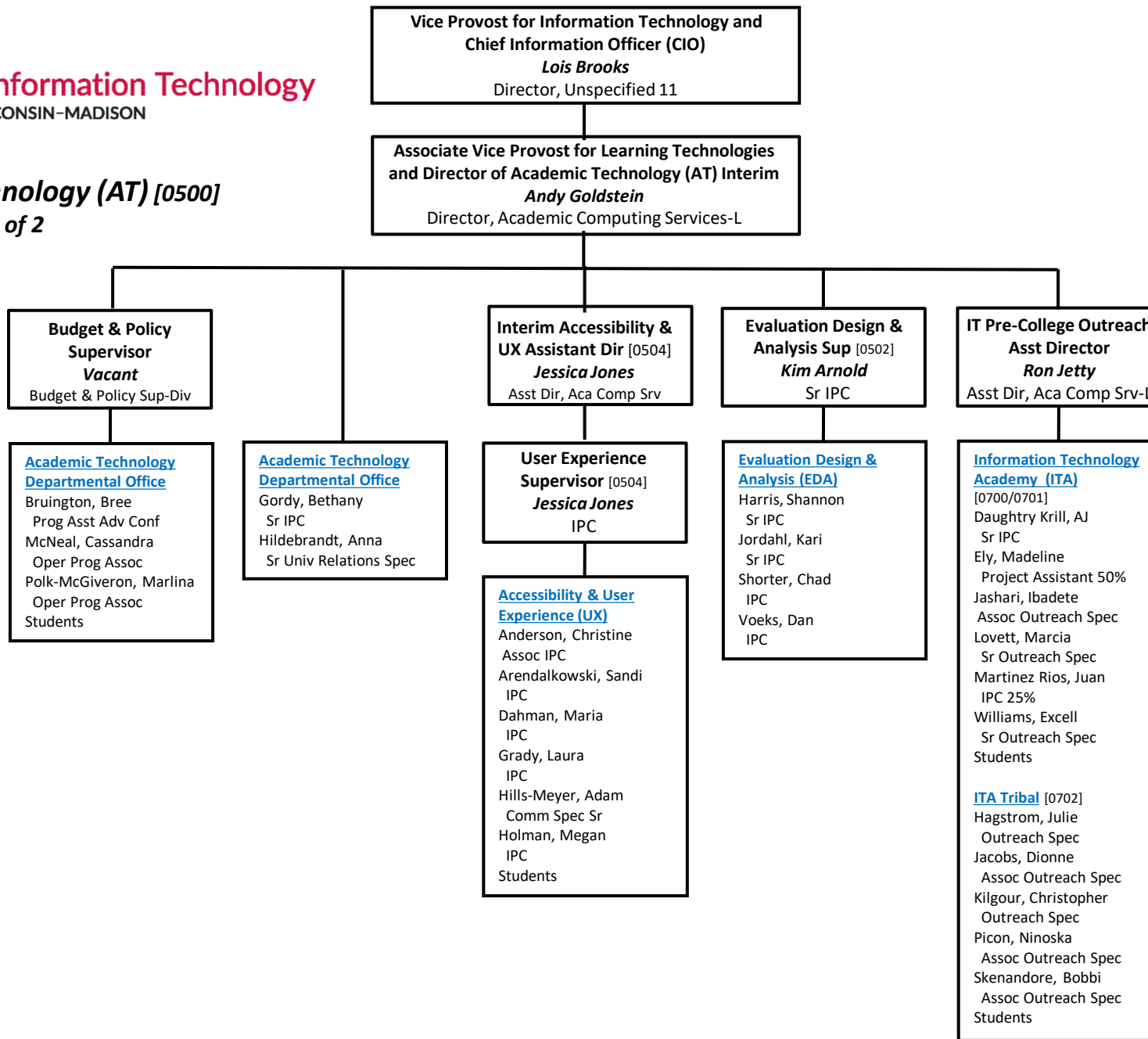
Enterprise & Information Security Services

Core Services

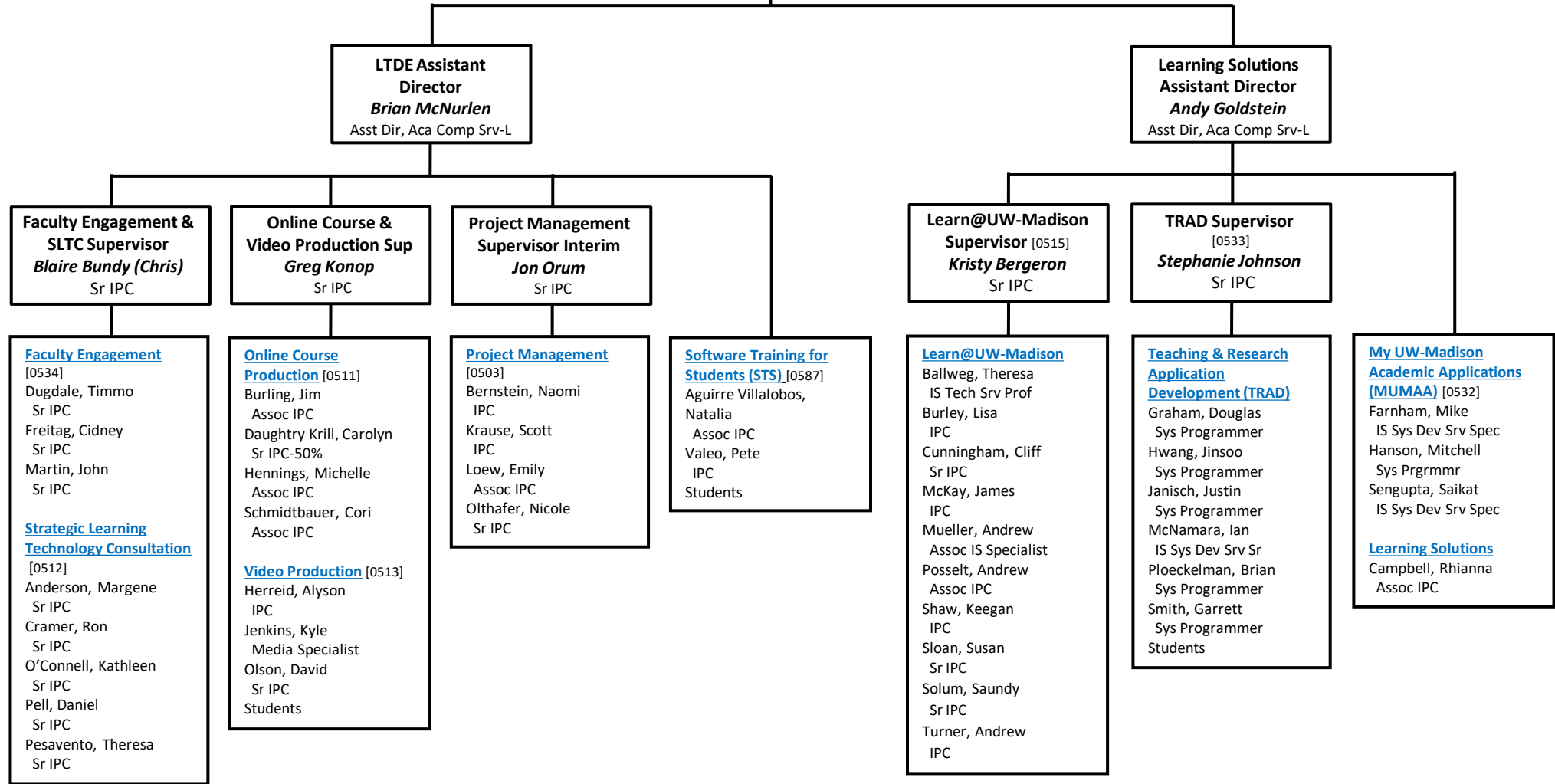
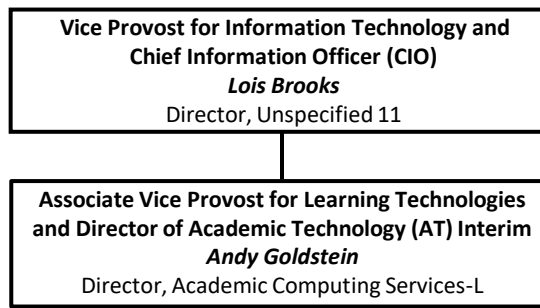
Management Team



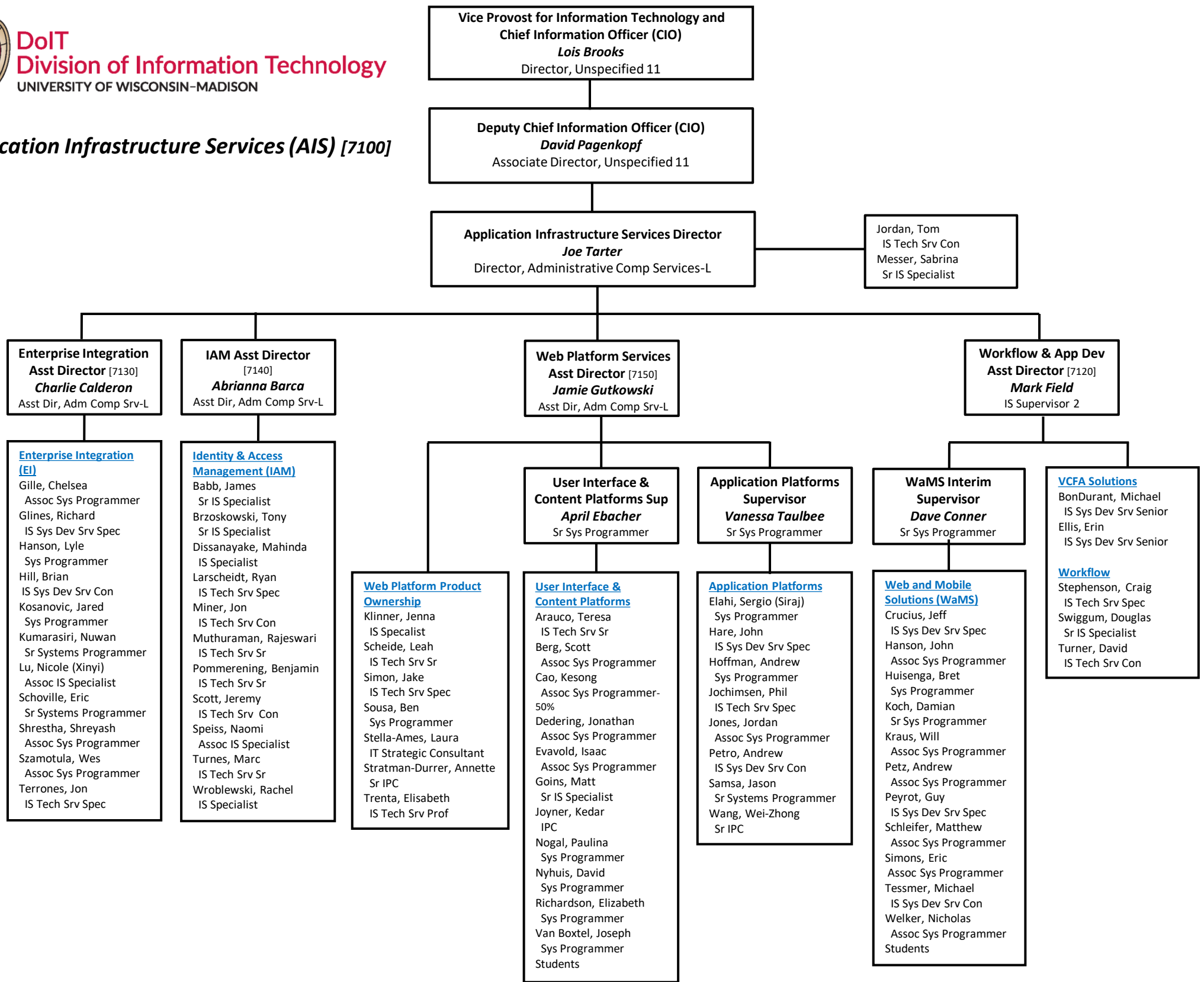
Academic Technology (AT) [0500]
 1 of 2



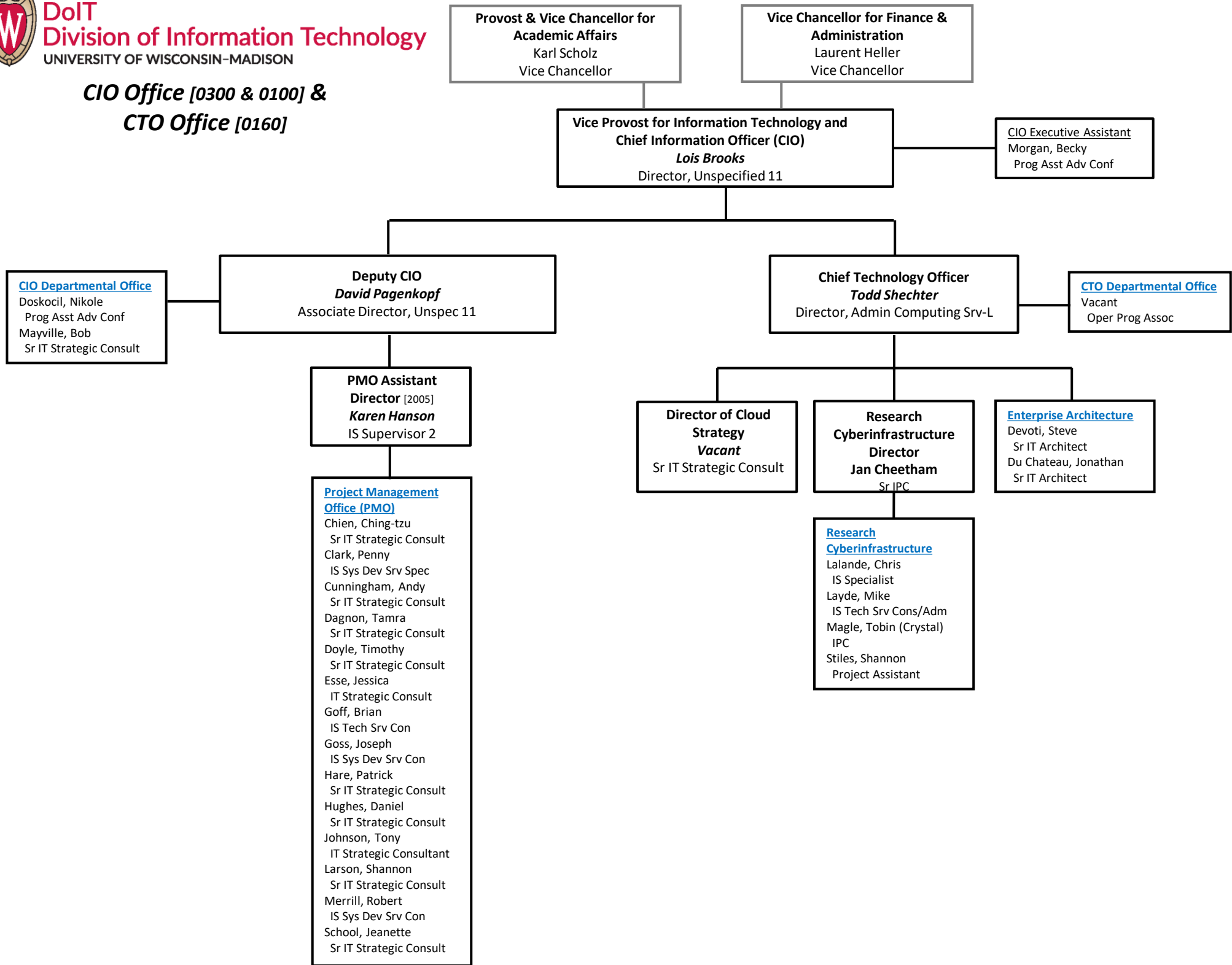
Academic Technology (AT) [0500]
2 of 2



Application Infrastructure Services (AIS) [7100]

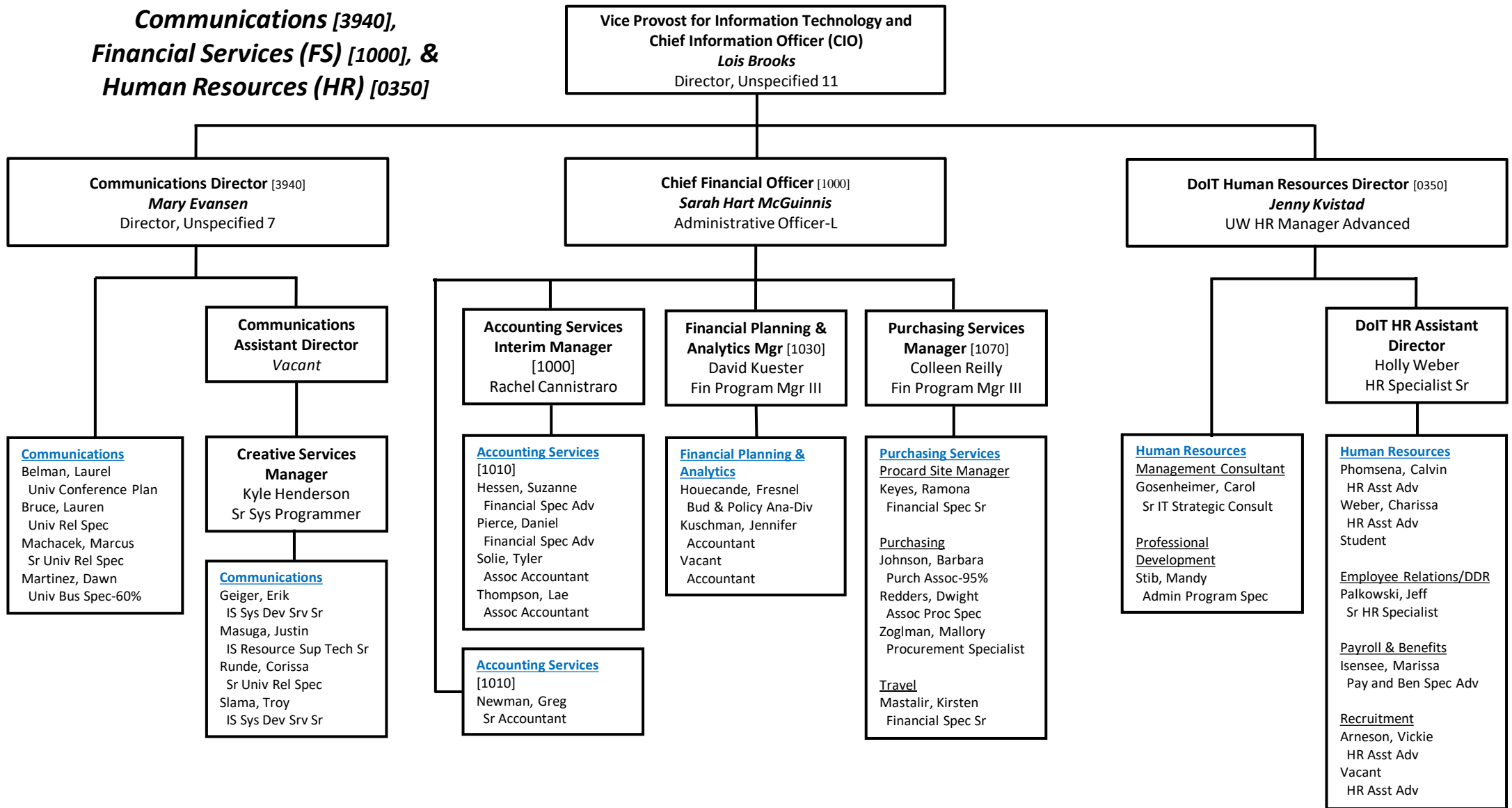


**CIO Office [0300 & 0100] &
 CTO Office [0160]**

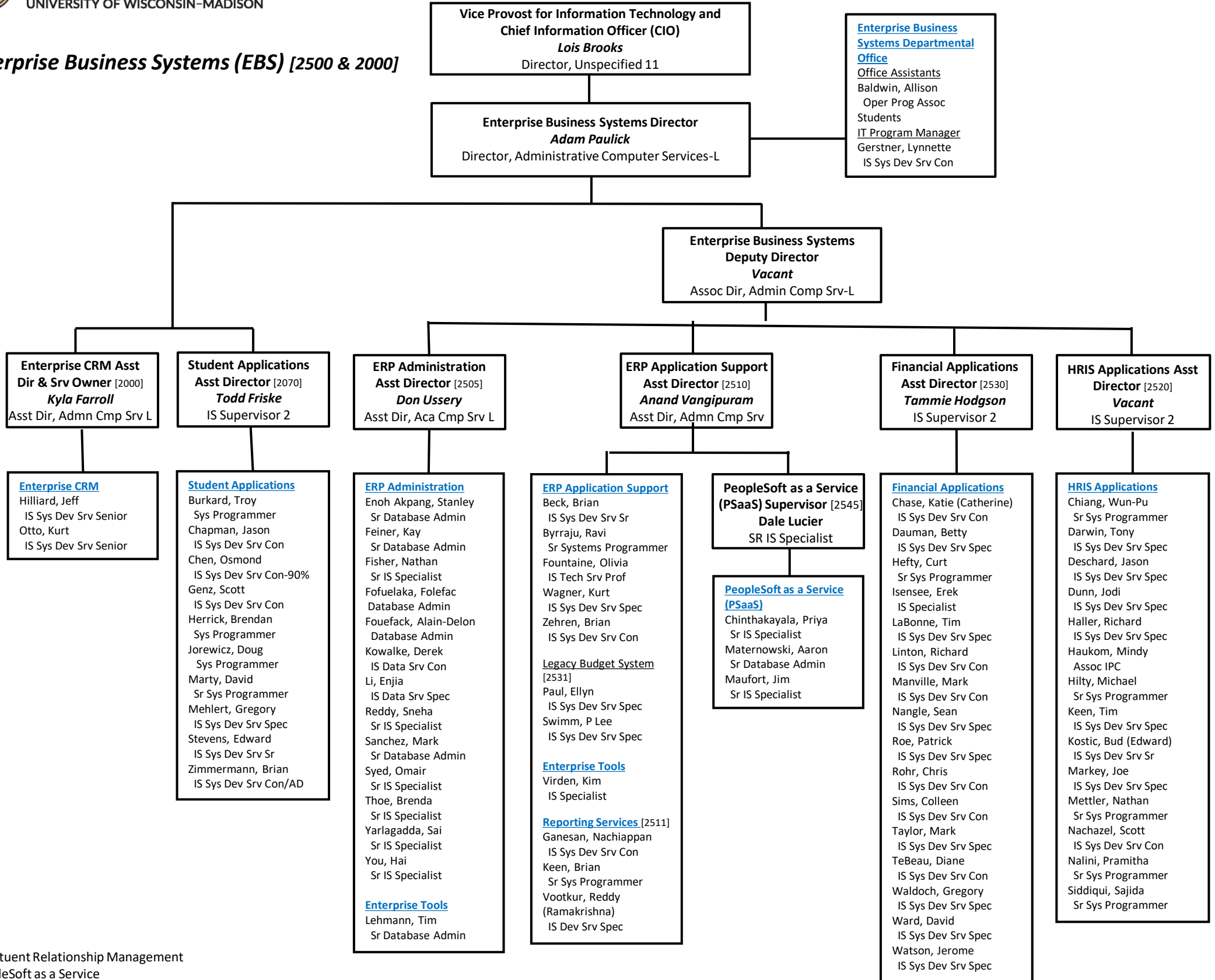


CIO: Chief Information Officer
 CTO: Chief Technology Officer
 PMO: Project Management Office

**Communications [3940],
 Financial Services (FS) [1000], &
 Human Resources (HR) [0350]**

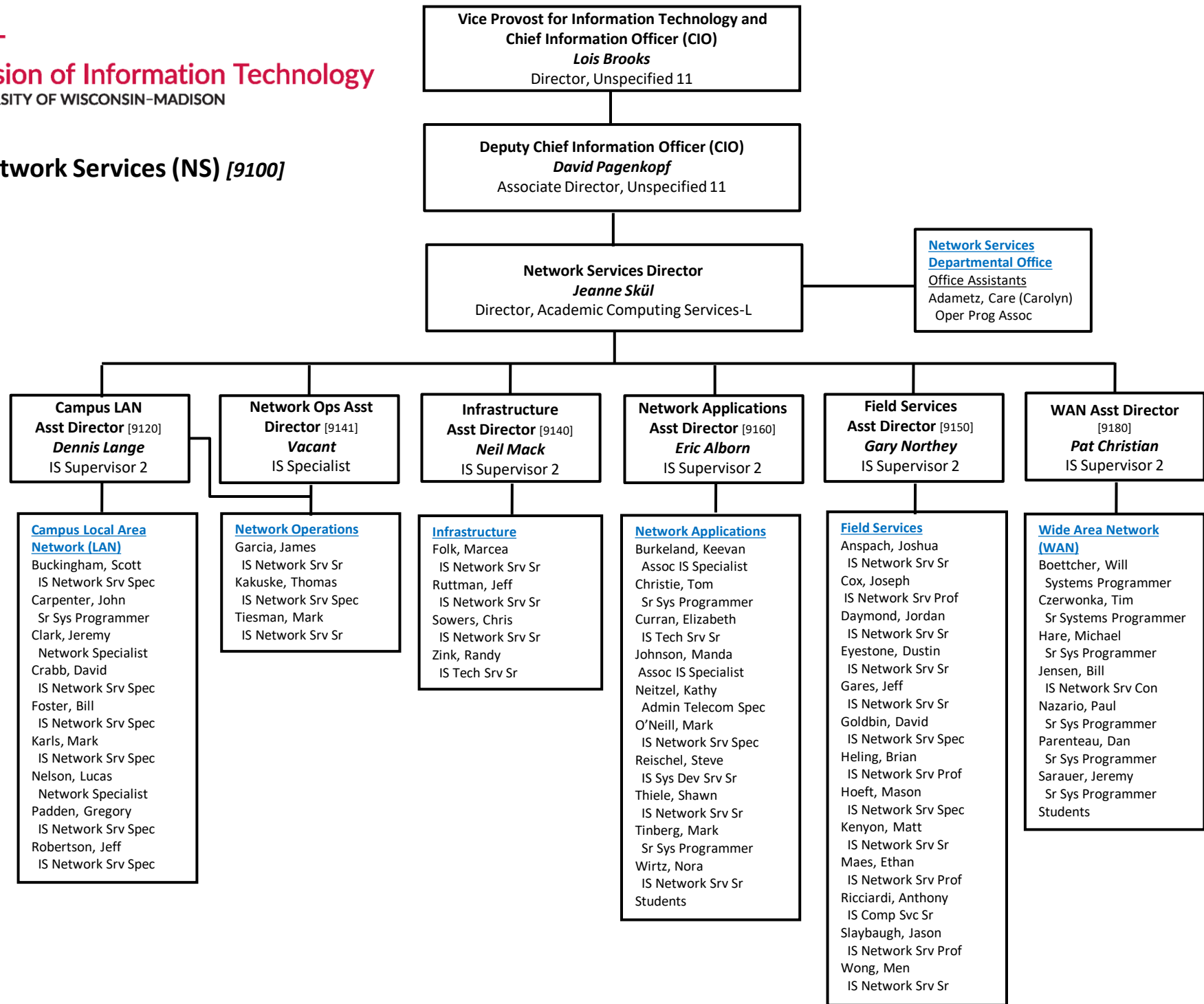


Enterprise Business Systems (EBS) [2500 & 2000]



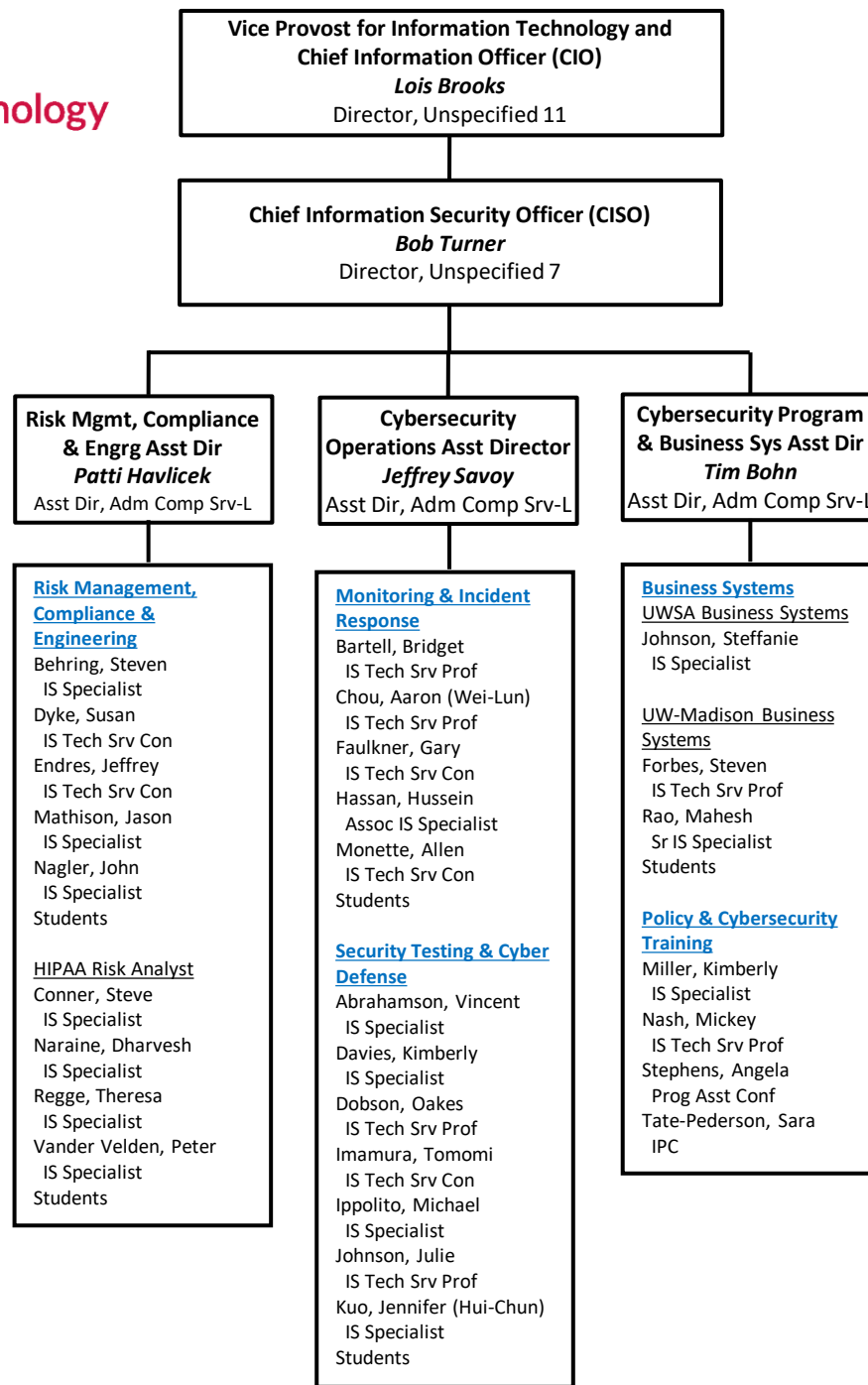
CRM: Constituent Relationship Management
 PSaaS: PeopleSoft as a Service

Network Services (NS) [9100]

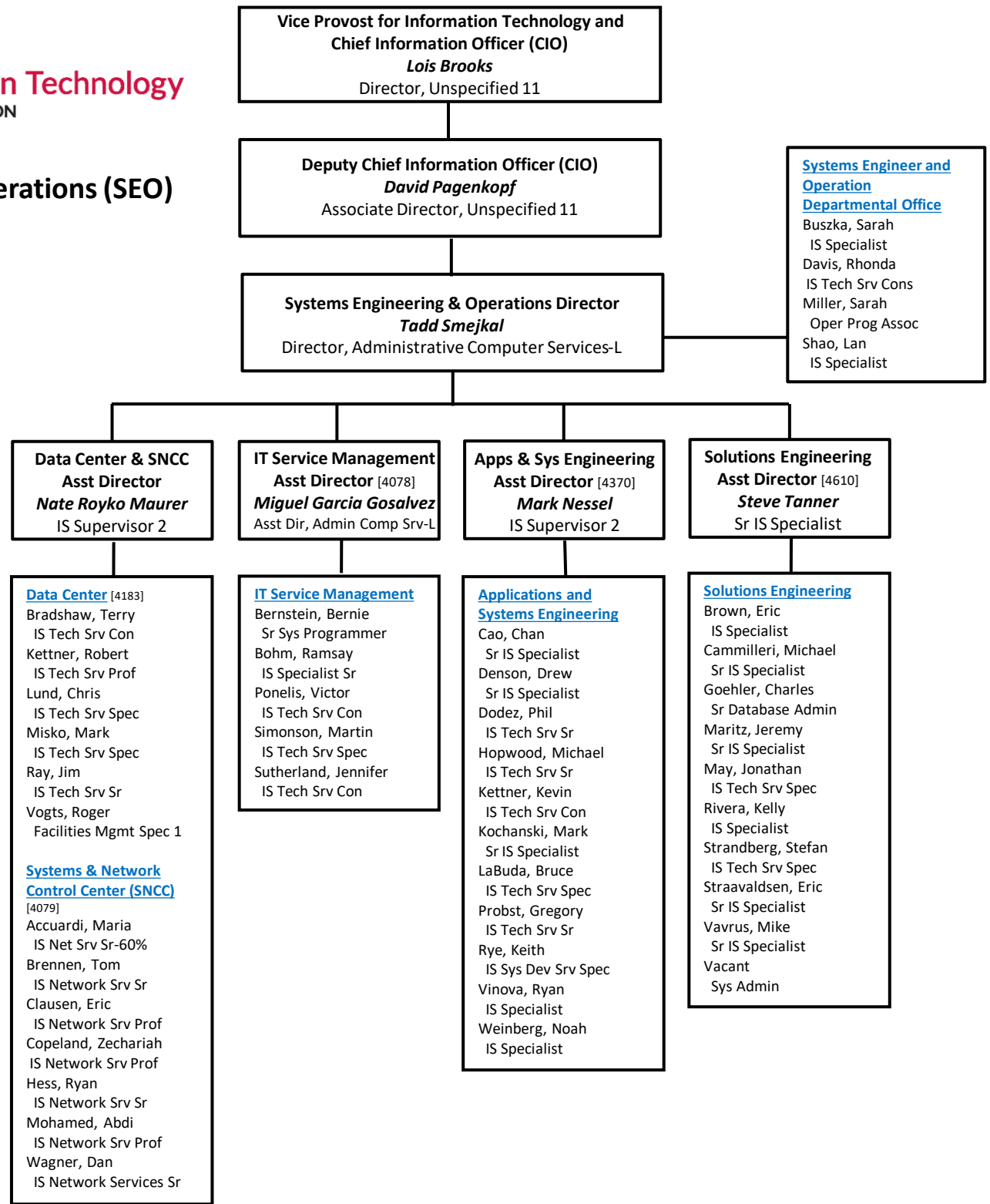




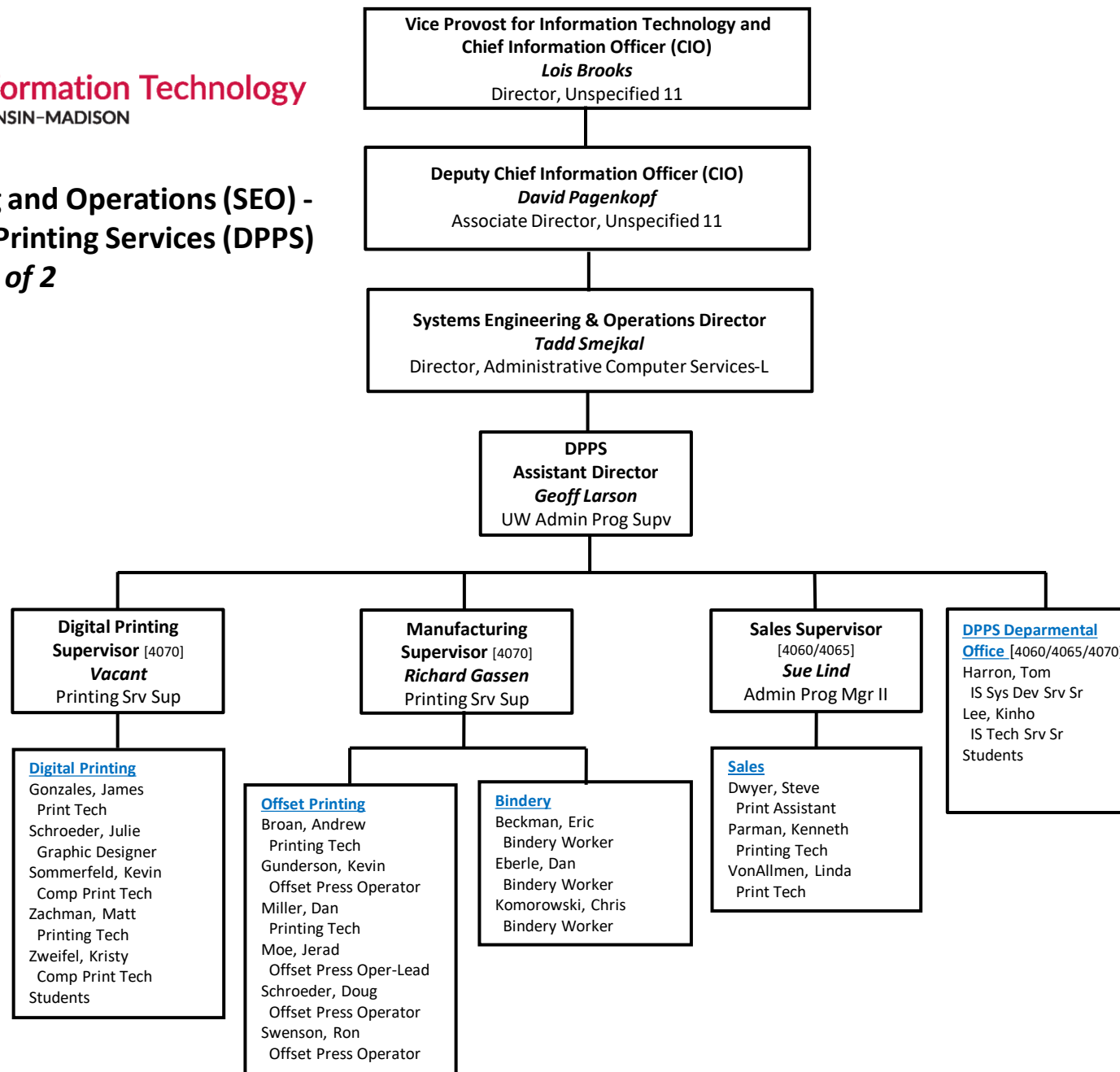
Office of CyberSecurity [0370]



Systems Engineering and Operations (SEO)
[4000] 1 of 2



**Systems Engineering and Operations (SEO) -
 Digital Publishing & Printing Services (DPPS)**
 2 of 2



User Services (US) [5000]

